



**PIET
OUDOLF**
// DETROIT

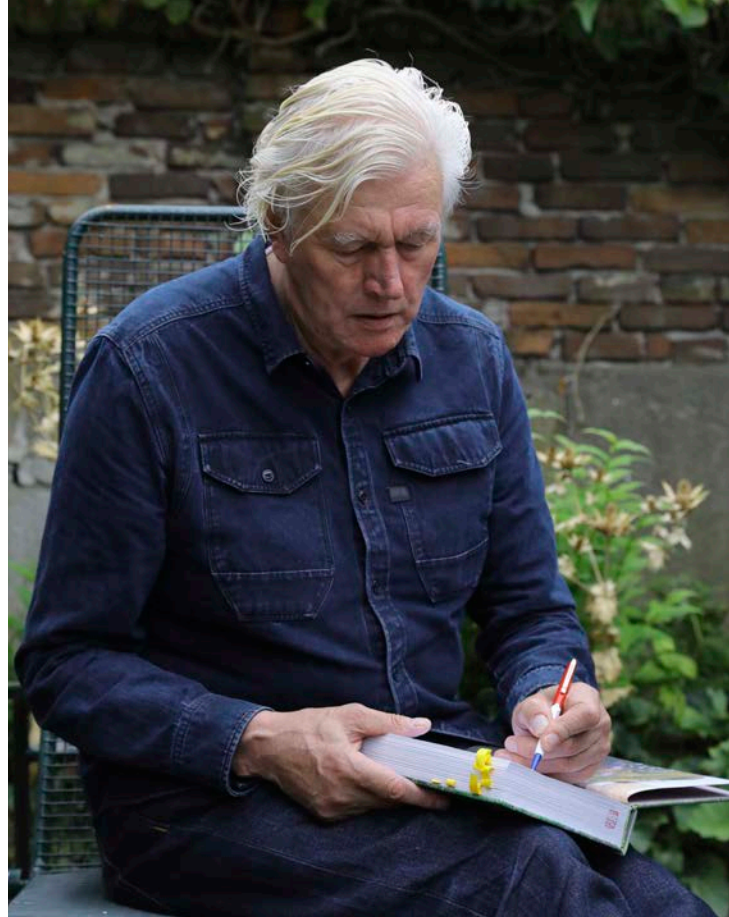
Bringing people
together around
a new kind of
garden

It began as a love letter from Detroit.

How do you attract the attention of visionary landscape designer Piet Oudolf, planting designer of New York City's High Line? You write an old-fashioned love letter from Detroit—about a bold new public garden idea. Write about the energy, the cultural heritage, the can-do attitude and creative legacy of Detroit. About opportunity, abundant green space, and people with open hearts and minds.

Piet Oudolf called us a few weeks later. His current focus lies in designing public gardens, and Detroit sounded like an interesting place to see. After one visit, he was in. Piet is an artist—creating transformative gardens for the benefit of all. We have the opportunity to work with a master.





Piet Oudolf, Dutch master

His work has been called “euphoric and transcendent.” With a deep knowledge of plants, Oudolf is an artist working to tap into our emotional responses to nature. People gasp upon seeing Lurie Garden in Chicago’s Millennium Park, and spend hours wandering the High Line feeling a timeless sense of joy. Oudolf sees beauty not only in a flower, but in leaf texture, plant form, seed heads, movement—and in the gradual decay heading from autumn into winter.

Oudolf is also a steward of our environment using common sense practices. Inspired by North American prairies, he incorporates native plants and grasses in intricate combination with other durable, non-invasive plant selections. His gardens teem with life attracting not just people but birds, insects and pollinators. An annual late-winter cut down with a mulching mower enriches the soil with its own living mulch. Oudolf visits his gardens over time to work with local staff and make adjustments as needed, while allowing spontaneous seeding and change to occur naturally.

- A prolific author of nine books on plants and garden design
- Selected as Architectural Digest’s 2018 AD100
- Lives and works in Hummelo, Netherlands





A naturalistic perennial garden on Belle Isle

Belle Isle is the perfect point of connection for residents and visitors—to the park's amenities, the city, water and the region's greenways. This is why Piet Oudolf has selected the land surrounding the Nancy Brown Peace Carillon for his newest public garden—in the cultural heart of Belle Isle, adjacent to the historic Conservatory, Aquarium and Remick Band Shell.

“Piet’s designs in parks like the High Line have done so much [to show] that gardens can be more than flowers arranged to grow in particular patterns. They can be **lush and wild and beautiful**, and **attract wildlife** and **absorb stormwater** and **immerse people in nature, right here in the city.**”

ANDI PETTIS, HIGH LINE NYC

green space

Joining urban farmers and gardeners, landscape professionals, greenway pioneers and nature lovers in helping Detroit to reinvent abundant green space in new and sustainable ways.

community

People coming together to enjoy nature in a beautiful setting, and working together for the public good—this is our definition of community building.

education

Family activities, birding and plant walks, speakers and seminars will engage all ages. Detroiters can also take ideas home about gardening and environmental stewardship to benefit our neighborhoods.

economic impact

We are committed to using local and Midwest sources to grow and supply plants, provide professional landscape and construction services. Increased visitors to Belle Isle will also contribute to the garden's economic impact.

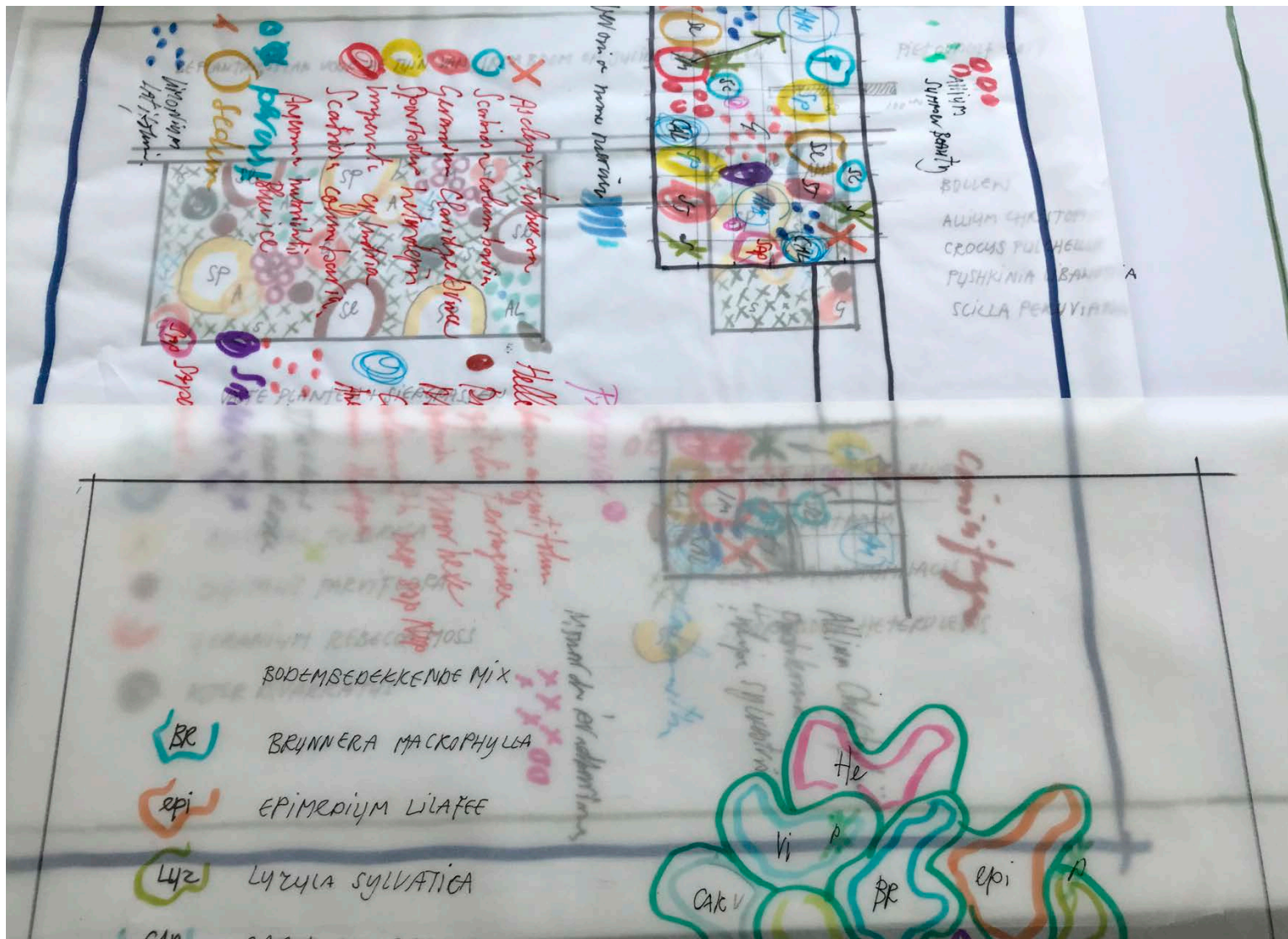
design

Visionary designer Piet Oudolf creates living works of art—combining perennials and native grasses by the thousands in ecological gardens that never close for the season.



about us

Oudolf Garden Detroit is a local group of volunteers dedicated to creating and maintaining a Piet Oudolf public garden in Detroit. We operate under the Belle Isle Conservancy 501(c)(3) nonprofit organization. Funding is provided by private donors, businesses and institutions. The garden will be endowed to fund maintenance into perpetuity.



Join Us



oudolfgardendetroit.org

300 RIVER PLACE DRIVE, SUITE 2800

DETROIT, MI 48207

313/209-6389

Oudolf Garden Detroit

Operating under the
Belle Isle Conservancy 501(c)(3)
nonprofit organization

